

Data of ClearSee™ treated samples

ClearSee™ is applicable to various plant species other than Arabidopsis. Fig. 11 shows ClearSee™-treated leaves of torenia, petunia, tobacco, tomato, cucumber, and rice after 6-days incubation. In the case of rice, removal of cuticular wax are required for penetration of solution. Immerse the rice samples into organic solvents such as chloroform for 10~30 seconds and then fix with a fixative solution.

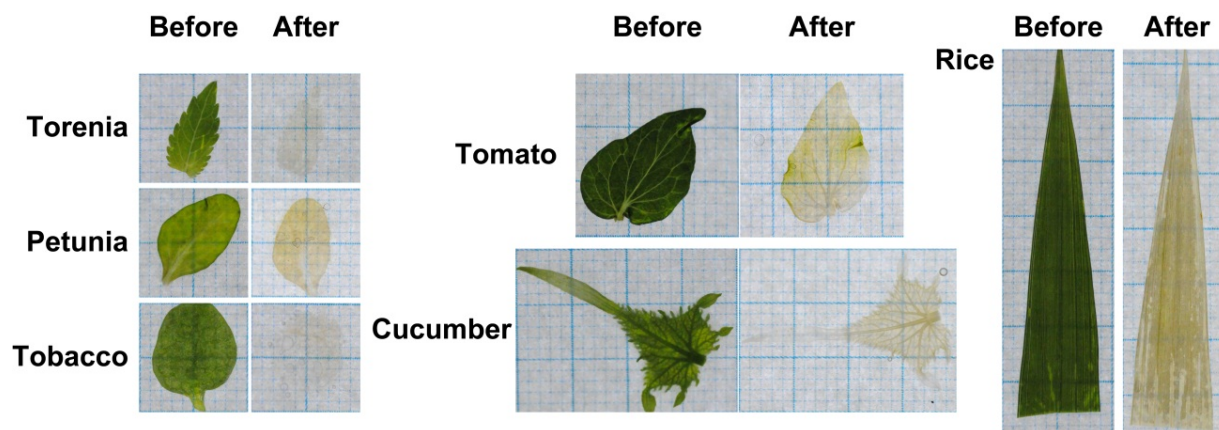


Fig. 11 ClearSee™-treated leaves of various plant species (6-days incubation).

References

- 1) Kurihara, D. *et al.* : *Development*, **142**, 4168-4179 (2015).
- 2) Nagaki, K. *et al.* : *Scientific Reports* **7**, 42203(2017).
- 3) Ohtsu, M. *et al.* : *Protoplasma* (2017).
- 4) Kalmbach, L. *et al.*: *Nature plants*, **3**, 17058(2017)..

Reagent List

Wako cat. No.	Product name	Grade	Package Size	Storage Condition
031-25151	ClearSee	Plant Optical Clearing Reagent	50ml	Keep at room temperature

- Listed products are intended for laboratory research use only, and not to be used for drug, food or human use.
- This brochure may contain products that cannot be exported to your country due to regulations.
- Bulk quote requests for some products are welcome. Please contact us.

FUJIFILM Wako Pure Chemical Corporation

1-2, Doshomachi 3-Chome
Chuo-Ku, Osaka 540-8605, Japan
Tel: 81-6-6203-3741
Fax: 81-6-6203-1999

FUJIFILM Wako Chemicals U.S.A. Corporation

Toll-Free (U.S. only): 1-877-714-1920
Head Office (Richmond, VA)
Tel: 1-804-714-1920
Fax: 1-804-271-7791

FUJIFILM Wako Chemicals Europe GmbH

European Office:
Fuggerstraße 12, D-41468, Neuss, Germany
Tel: 49-2131-311-0
Fax: 49-2131-311100