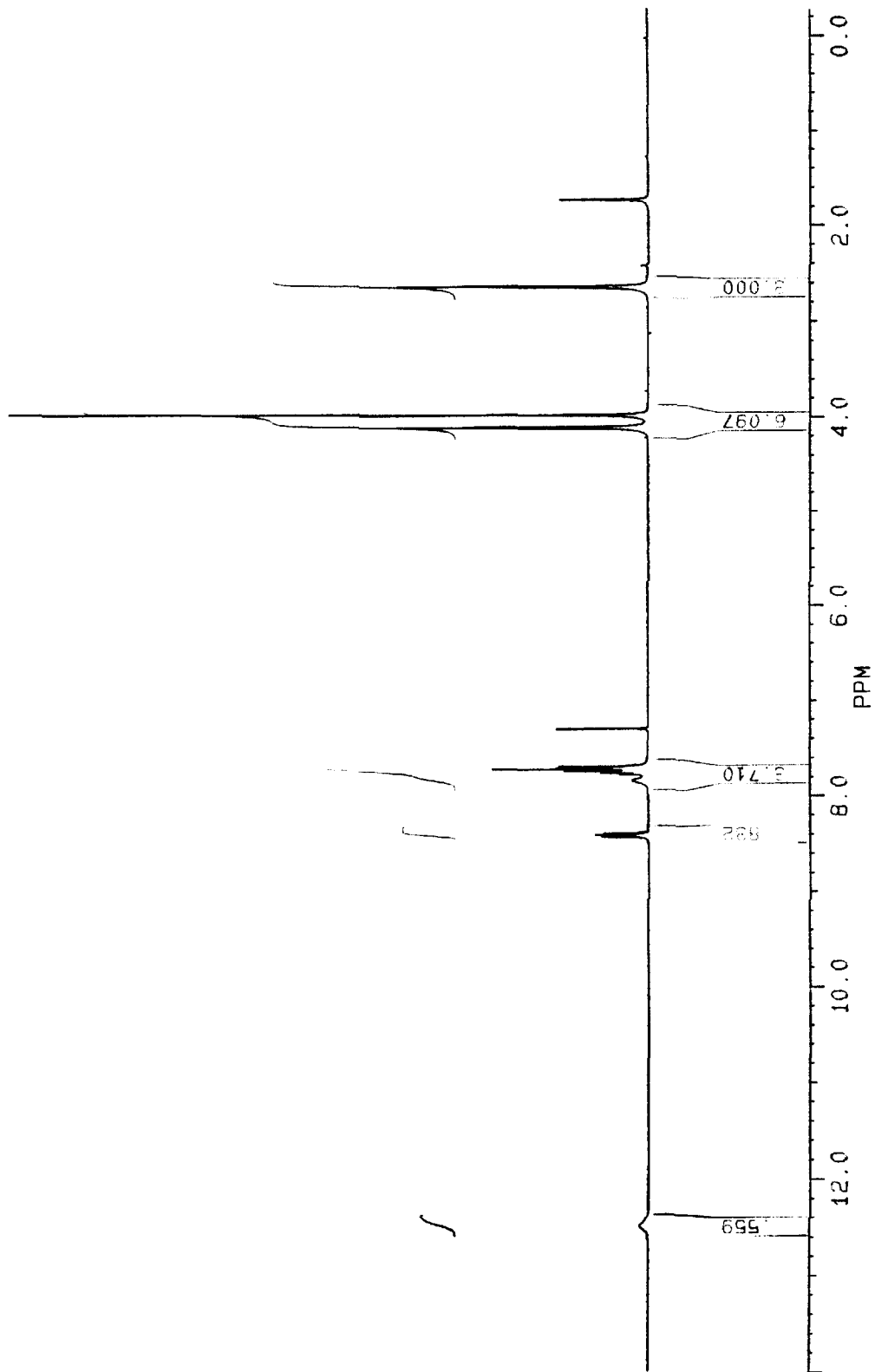


SF 300.133
 SY 299.0
 O1 5160.000
 SI 32768
 TD 32768
 SW 6024.096
 HZ/PT .368
 PW 6.0
 RD .500
 AG 2.720
 RG 20
 NS 32
 TE 298
 FW 7600
 O2 0.0
 DP 63L D0
 LB .200
 GB 0.0
 CX 22.00
 CY 10.00
 F1 14.000P
 F2 -.300P
 HZ/CM 195.089
 PPM/CM .650
 SR 3365.35



12.4629
 8.4131
 8.4019
 8.3916
 8.3895
 8.3831
 8.3716
 8.3586
 7.8125
 7.7570
 7.7441
 7.7325
 7.7271
 7.7228
 7.7136
 7.7021
 7.6899
 7.6793
 7.6703
 7.6591
 7.6459
 7.2682
 4.0846
 3.9502
 3.9329
 2.6143
 1.7043

PPM

品名
メトスルフロロンメチル