

## Description

- Origin :** Pea Peptone is obtained by enzymatic hydrolysis of pea flour protein.
- Context :** this peptone is animal free and is unconcerned by GMO issues (European Directive 2001/18/CE). It is, to the best of our knowledge, non-allergenic and not subject to mandatory declaration according to Annex IIIa of the EU directive 2003/89/EC, updated with 2006/142/EC. This reference is certified **Kosher DE**. An identical **Kosher Pareve & Halal** certified version is available under reference **A253100**.
- Application :** Dominated by peptides under 800 Daltons, Pea Peptone, by virtue of its outstanding fertility, clarity and stability can be used in a wide variety of applications ; from biopharmaceuticals, diagnostics, agro-food fermentation and in cell culture, as a replacement for Foetal Bovine Serum.



## Physical properties

Appearance : clear brown powder  
Stability (2% in solution) : stable  
Solubility in water at 2% : total

## Microbiological controls

Total aerobic mesophilic flora ≤ 5000 cfu/g

## Chemical analysis

Total nitrogen (N<sub>T</sub>) : 12.4%  
α-amino nitrogen (N<sub>α</sub>) : 3.7%  
N<sub>α</sub> / N<sub>T</sub> : 0.30  
Sulfuric ash : ≤ 15%  
pH (2% in solution) : 7.3  
Total carbohydrates : approx. 4.30 %  
Chlorides (as NaCl) : 1.3%  
Loss on drying : ≤ 6.0%

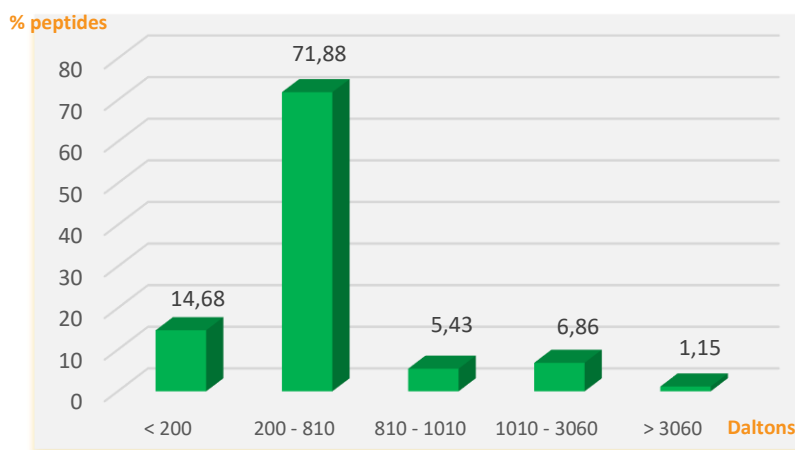
## Storage

Keep in original packaging when not in use, in a dry area ideally between 10 and 35°C. Avoid direct sunlight. Hygroscopic product.  
Expiry date : 5 years from date of manufacture

## Amino acid (AA) distribution (mg/g)

	Total AA	Free AA		Total AA	Free AA
Aspartic acid	100.4	2.7	Methionine	8.50	1.30
Threonine	30.1	7.07	Isoleucine	36.6	16.10
Serine	41.4	9.90	Leucine	62.5	24.39
Glutamic acid	166.5	8.18	Tyrosine	29.3	7.91
Proline	36.7	1.00	Phenylalanine	39.6	13.38
Glycine	37.2	2.90	Histidine	20.4	4.37
Alanine	39.3	7.02	Lysine	64.3	15.96
Cysteine	7.30	/	Arginine	76.4	19.56
Valine	40.3	7.43	Tryptophan	18.4	/

## Molecular weight distribution (Daltons)



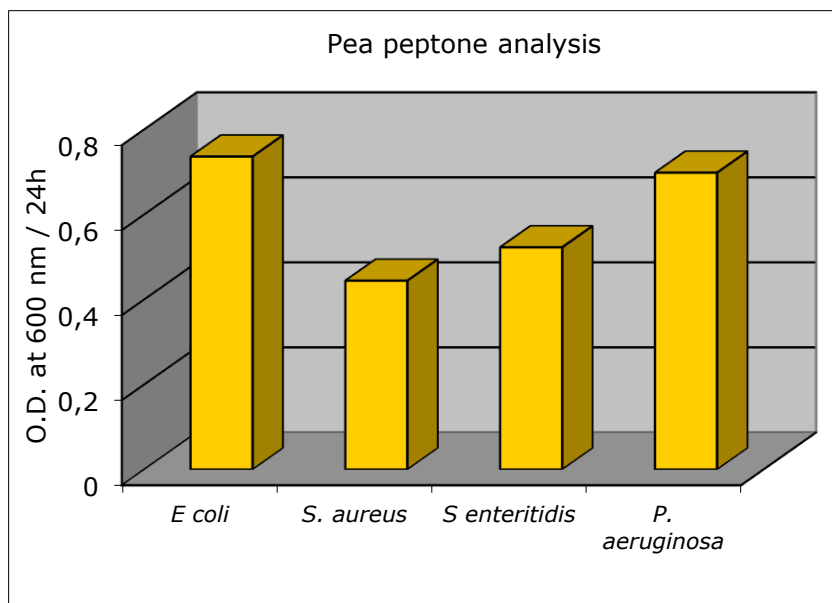
## Standard packaging

25 kg carton ; other formats inquire. Delivered with Certificate of Analysis, Certificate of Origin. Separate non-animal, GMO and Allergen statements available upon request.

## Sanitary / Regulatory statement

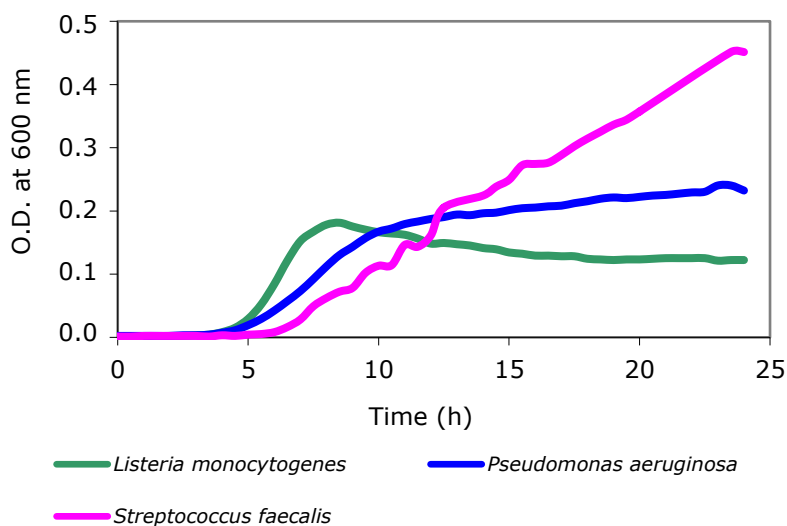
This plant peptone is classified animal-free by SOLABIA S.A.S. Based on the manufacturing protocol, we attest that no animal raw materials are prescribed for use in the production this product nor are any of the raw materials derived from animal products. Also, to the best of our knowledge, the product contains no genetically modified organisms as defined by current legislation for labelling (absence = less than 0.9%).

## OBSERVED MICROBIAL GROWTH POTENTIAL :



Inoculum  $10^6$  cfu / mL  
Growth medium: 3 % peptone + 0.25 % glucose

Pea peptone analysis



Laboratory tests demonstrate excellent growth of a wide variety of microorganisms, including fastidious bacteria. Used in cell culture as a growth supplement, it may allow a reduction in the amount of bovine origin products used with similar results. It can be recommended for either a replacement for bovine substrates or as a stand-alone peptone for fermentation. Results may differ depending on individual laboratory conditions and for other genera, species and strains.



### Certifications profile :

Produced under **ISO 9001 v 2015** certification



Manufacturing site and quality system open to audits by qualified customers\*.

CoA available online : use product code **A250100** + lot number  
<https://www.solabia.com/coa>

Allergen considerations : **NO**

GMO issues : **NO**

**Kosher certification : yes**

Orthodox Union ; New York, NY USA.  
Rabbi Menachem Adler, Administrator

**Halal certification :** No A250100  
**Yes A253100**



HFFIA ; The Hague, Netherlands.  
Inquire with Solabia for more information

V. 02/2021

The information presented in this document is submitted in good faith based on internal testing performed at Solabia S.A.S. and represents the best of our knowledge at the present time. It is provided as a guide and no warranty, implied or otherwise is associated with this data, nor is any liability assumed for patent infringement. All data represents typical analyses not to be taken for exact specifications. \*Audits may involve fees dependent on volume of business.

End-users are directed to perform proprietary tests to determine suitability and performance for specific applications. The information and results contained in this technical data sheet are susceptible to modification at any time, without warning.