

Description

Origin : Bacteriological Yeast extract is obtained by autolysis of yeast (*Saccharomyces cerevisiae*) by its own enzymes (autolysis).

Context : Animal free, GMO negative, it is, to the best of our knowledge, non-allergenic. **Kosher Pareve & Halal** certification available. Produced through a different protocol than the A120200, it is hydrolysed to a higher degree and offers a different molecular weight distribution and amino acid profile, with more streamlined specifications and shelf life.

Application : Yeast extract is a principal component in culture media in light of its high content of carbohydrates, vitamins, growth factors and amino acids. It promotes growth of a wide variety of microorganisms, including yeasts and molds.



Physical properties

Appearance : light beige powder
Odor : characteristic
Stability (2% in solution) : clear & stable
Solubility in water at 2% : total

Microbiological controls

Total aerobic mesophilic flora ≤ 10000 cfu/g
Salmonella : negative

Chemical analysis

Total nitrogen (NT) : 11.0%
α-amino nitrogen (N_α) : 6.0%
N_α / NT : 0.54
Sulfuric ash : 12.0%
pH (2% in solution) : 7.0
Chlorides (as NaCl) : ≤ 0.4%
Loss on drying ≤ 6.0%

Heavy metals

Lead : ≤ 1.0mg/kg
Arsenic : ≤ 0.5mg/kg
Mercury : ≤ 0.5mg/kg

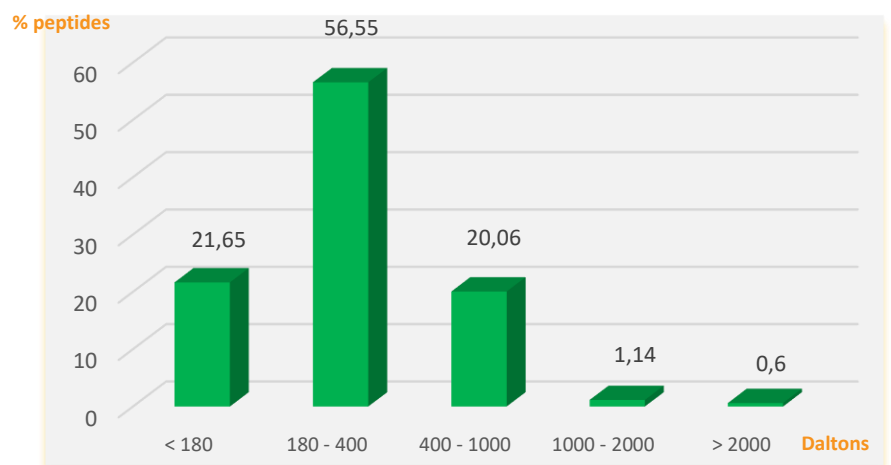
Amino acid (AA) distribution (mg/g)

	Total AA	Free AA		Total AA	Free AA
Aspartic acid	67.0	2.4	Methionine	7.0	0.7
Threonine	20.0	2.8	Isoleucine	22.0	3.2
Serine	17.0	2.8	Leucine	38.0	4.6
Glutamic acid	124.0	7.1	Tyrosine	14.0	1.4
Proline	9.0	2.2	Phenylalanine	25.0	2.5
Glycine	11.0	2.8	Histidine	5.0	1.2
Alanine	78.0	6.8	Lysine	18.0	4.6
Cysteine	12.0	0.5	Arginine	32.0	1.8
Valine	25.0	3.7	Tryptophan	/	/

Standard packaging

25 kg carton ; low density polyethylene (LDPE) sacks (food grade) ; other formats inquire.
 Delivered with Certificate of Analysis, Certificate of Origin.
 Separate non-animal, GMO, Kosher, Halal and allergen statements available upon request.

Vitamins and Molecular weight distribution



Vitamins	ppm	Vitamins	ppm
Thiamine (B1)	4.6	Folic Acid (B9)	26.7
Riboflavin (B2)	48.6	Biotine (B7)	7.8
Pyridoxine (B6)	18.0	Cobalamin	0.22µg/100g
Pantothenic Acid (B5)	112.0		

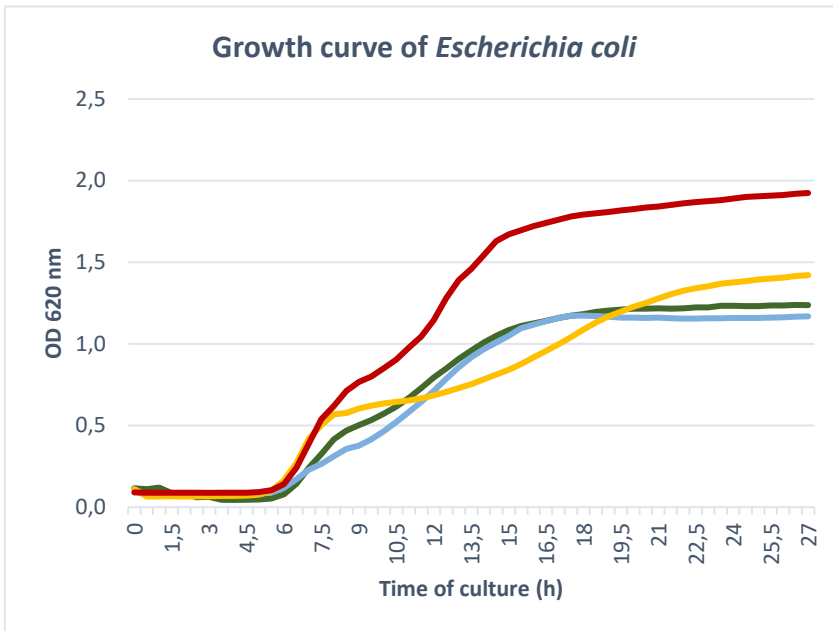
Sanitary / Regulatory statement

This plant peptone is classified animal-free by SOLABIA. Based on the manufacturing protocol, we attest that no animal raw materials are prescribed for use in the production this product nor are any of the raw materials derived from animal products. Also, to the best of our knowledge, the product contains no genetically modified organisms as defined by current legislation for labelling (absence = less than 0.9%).

Storage

Keep in original packaging when not in use, tightly sealed in a dry area ideally between 10 and 35°C. Avoid direct sunlight. Hygroscopic product.
 Expiry date : 3 years from date of manufacture.

OBSERVED MICROBIAL GROWTH POTENTIAL :

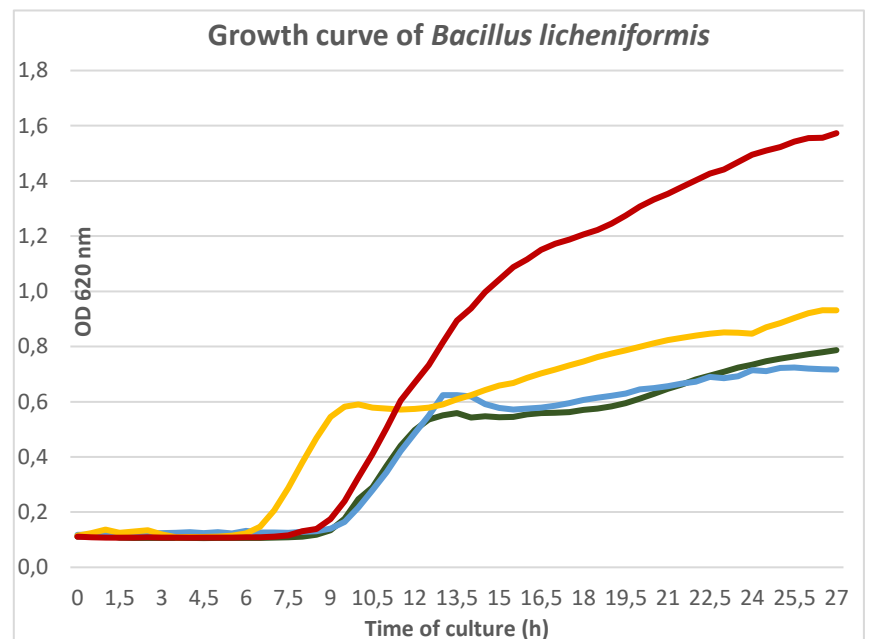


Comparisons using Bioscreen with other Solabia soy peptones. Tests performed in microplates, media composition 30 g / L with no added sugar.

Standard ATCC® or internal strain collection used in comparisons.

Legend (both graphs)

- Soy 1 —
- Soy 2 —
- Soy 3 —
- A120400 —



Certifications profile :

Produced under **ISO 9001 v 2015** certification



Manufacturing site and quality system open to audits by qualified customers*.

CoA available online : use product code **A120400** + lot number
<https://www.solabia.com/coa>

Allergen considerations : **NO**

GMO issues : **NO**

Kosher certification : Yes

Orthodox Union ; New York, NY USA.
 Rabbi Menachem Adler, Administrator

Halal certification : Yes



HFFIA ; The Hague, Netherlands.
 Inquire with Solabia for more information

V. 02/2023

The information presented in this document is submitted in good faith based on internal testing performed at Solabia S.A.S. and represents the best of our knowledge at the present time. It is provided as a guide and no warranty, implied or otherwise is associated with this data, nor is any liability assumed for patent infringement. All data represents typical analyses not to be taken for exact specifications. *Audits may involve fees dependent on volume of business.

End-users are directed to perform proprietary tests to determine suitability and performance for specific applications. The information and results contained in this technical data sheet are susceptible to modification at any time, without warning.