



Technical data sheet

Product description :

A peptone produced via enzymatic digest of food-grade, NZ origin casein, using microbial enzymes in the place of porcine pancreatin. Designed to mimic the results of a standard Tryptone but without illicit material that could compromise Kosher or Halal certification. Principal applications center on the probiotic and lactic strain fermentation industry, as well as vaccine production where religious certification is required. Can be used solo or as a component in more complex growth media.

Enzymatic digest of Casein KH is compliant with Note for Guidance EMEA/410/01 – Rev. 3 of March 2011. It is not allergen-free due to the presence of milk proteins and contains no other animal products. It is **Kosher Dairy** and **Halal** certified, produced in France.

Typical analysis of A144600

Physical properties	Result
Appearance	white powder
Stability after autoclaving (5%)	stable
Solubility in water (5%)	total

Chemical properties	Result	Result	
Total Nitrogen N_T	12,1 %	Nitrites	negative
α -amino nitrogen (N_α)	3,5 %	Proteoses	positive
N_α/N_T	0,29	Indole	negative
Sulfuric ash	13,0 %	Tryptophan	positive
pH (5%)	7,3	Calcium	< 0,08 %
Chlorides (NaCl)	0,1 %		
Loss on drying	\leq 6.0%		

Microbiological properties	Result
Total viable count	\leq 5000 cfu/g

Product packaging and storage

25 kg carton (double bagged LDPE individually sealed containing product)
 Store between 10 – 35°C, avoid direct sunlight and humidity.
 Expiry date : 5 years from manufacturing date

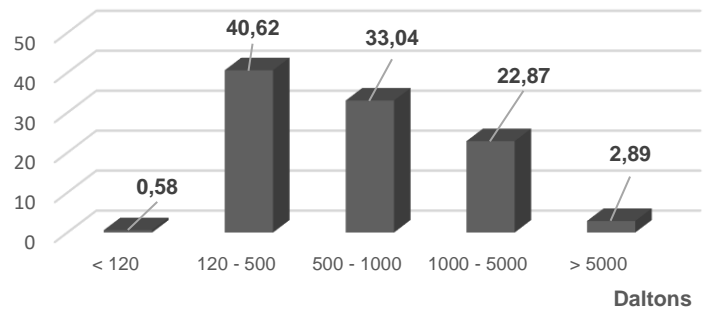
Regulatory documentation available

Certificate of Analysis	Kosher certificate
Certificate of Origin	Halal certificate
Veterinary Certificate*	Allergen certificate
Material Safety Data Sheet	

Typical data

Molecular weight distribution		%
> 5000		2,89
1000 - 5000		22,87
500 - 1000		33,04
120 - 500		40,62
< 120		0,58

% peptides



Typical data

Amino Acids profile (Total AA)	mg/g	mg/g	
Aspartic acid	54,6	Methionine	17,2
Threonine	32,3	Isoleucine	39,6
Serine	41,4	Leucine	69,9
Glutamic acid	167,0	Tyrosine	29,5
Proline	81,4	Phenylalanine	39,1
Glycine	14,8	Histidine	21,4
Alanine	23,8	Lysine	59,7
Cysteine	1,90	Arginine	28,2
Valine	50,3	Tryptophan	10,2

Sanitary & Origin statement

The casein used in this product is sourced from NZ origin and complete traceability can be provided. No other animal material is used in the production of this product.

To the best of our knowledge, this product has no compliance issues concerning Genetically Modified Organisms (GMO).

Produced under **ISO 9001 v 2015 ; ISO 14001 v 2015 ; ISO 45001 v 2018** certification.



Produced under continuous **Kosher & Halal** certification in France.



CoA available online : use product code **A144600** + lot number - <https://www.solabia.com/coa>

Manufacturing site and quality system open to audits by qualified customers. Inquire with Solabia.

*Veterinary certificate availability may depend on context of purchase.

Version : 02/2025

The information presented in this document is submitted in good faith based on internal testing performed at Solabia S.A.S. and represents the best of our knowledge at the present time. It is provided as a guide and no warranty, implied or otherwise is associated with this data, nor is any liability assumed for patent infringement. All data represents typical analyses not to be taken for exact specifications. Refer to Certificate of Analysis for current product specifications.

End-users are directed to perform proprietary tests to determine suitability and performance for specific applications. The information and results contained in this technical data sheet are susceptible to modification at any time, without warning.